

Audibel logo, Via, Via logo, Healthable, Thrive, Thrive logo, Thrive Care and the Thrive Care logo are trademarks of Starkey Laboratories, Inc.

Apple, the Apple logo, iPhone, iPad, iPod touch, App Store and Siri are trademarks of Apple, Inc., registered in the U.S. and other countries.

Google Play is a trademark of Google LLC.

The Bluetooth® word mark and logos are registered trademarks owned by Bluetooth SIG, Inc. and any use of such marks is under license.

©2019 TIME USA LLC. All rights reserved. Used under license. TIME and TIME USA LLC. are not affiliated with, and do not endorse products or services of Starkey Hearing Technologies.

The app may have slight differences depending on your phone.

Source

<sup>1</sup>Bassuk, S.S., Glass, T.A., & Berkan, L.F. (1999, Aug.3). Social disengagement and incident cognitive decline in community-dwelling elderly persons. *Annals of Internal Medicine*, 131[3], 165-173.

Download on the  
**App Store**

GET IT ON  
**Google Play**

  
**AUDIBEL**

Global Headquarters  
6700 Washington Ave. S.  
Eden Prairie, MN 55344  
1.800.769.2590

[audibel.com](https://audibel.com)

# ViaEdge<sup>AI</sup>

*Next-generation sound  
never before possible*



TIME  
BEST

INVENTIONS

2019

## Award-winning technology

The hearing aid that launched a revolution is one of TIME Magazine's 100 Best Inventions of 2019. Via AI, the world's first Healthable hearing aid with artificial intelligence and embedded sensors, addresses the deep connection between hearing health and overall health. Via Edge AI is built on this technology.

---

### Defining technology's leading edge

We've reinvented the hearing aid with integrated sensors and artificial intelligence to empower you with life-changing features and sound performance never before possible. It's just the beginning of our continuous effort to deliver the best hearing health solutions with the most advanced technologies.



# ViaEdge<sup>AI</sup>



## Give yourself an edge

With Via Edge AI, the power of artificial intelligence is at your fingertips, giving you never-before-possible, next-generation sound performance in the most challenging listening environments.

### **Built-in Artificial Intelligence**

Via Edge AI gives you an edge over other hearing aids with powerful artificial intelligence in every device.

---

### **Game-changing Sound with Edge Mode**

AI technology makes getting help in the most difficult listening environments easy, with just a tap.

---

### **Personalized Power**

The world's first custom-molded rechargeable hearing aids give you discreet, comfortable and convenient options.

# ViaEdge<sup>AI</sup>

Via Edge AI takes our industry-leading sound performance to new heights, providing you with instantaneous adjustments for the most challenging listening situations.

With a simple tap, the artificial intelligence inside the hearing aids scans the environment and makes changes on the spot to help you when you need it most. This next-generation sound processing is only available through Via Edge AI.

**Hear speech comfortably even in busy settings while unwanted noise is suppressed.**

**No buzzing, no whistling, just comfortable, feedback-free listening all day.**

**Get superior sound quality, clarity, more natural hearing and effortless transitions.**

**Stream crisp, clear phone calls and experience music the way it was meant to be heard.**

**Connect hearing aids via Bluetooth® with accessories and select smartphones.\***

**Preserve peace and quiet while important sounds like speech are amplified.**



\*Remote Microphone + is required for certain smartphones.



# Healthy hearing means a healthier you

A growing body of evidence points to a connection between hearing health and overall health. People who treat their hearing loss not only hear better, they lower their risk for serious health issues such as cognitive decline and dementia.<sup>1</sup>



## **Better tracking accuracy**

The ear is the best place to track health and fitness data. Via Edge AI provides you with that advantage.



## **Body Tracking**

Staying active is key to staying healthy. Tracking steps and movement has been shown to inspire continuing or increasing activity.



## **Brain Tracking**

A healthy social life can reduce stress and prevent depression, leading to better brain health. Monitoring hearing aid use and engagement can encourage more social interaction.



## **Fall Detection and Alerts**

Designed to help you stay independent, falls can be detected and alert messages sent to selected contacts.



# Two powerful apps that work together

thrive 

For you

## Easy personalized control

The Thrive Hearing Control app works seamlessly with Via Edge AI to give you complete control of your hearing aids. Change settings easily, quickly adjust volume, create customized memories and stream music or phone calls with the touch of a button.

## And that's just the beginning

The Thrive Hearing Control app delivers many powerful features that are easy to use and will help you manage your health and access useful information.



thriveCare 

For the people who care about you

## Maintain your independence

Thrive Care provides peace of mind to those you choose to share information with while helping you feel confident and independent.

With Thrive Care, you can share helpful information like your physical activity, hearing aid usage, and social engagement with pre-selected people. You decide what to share from your Thrive Hearing Control app. Exclusive to Via Edge AI hearing aids.



# Simplify + thrive

No other hearing aid puts powerful, easy-to-use information features at your fingertips like Via Edge AI.



## Thrive Assistant

Use voice commands to get quick answers to questions, set reminders and control your hearing aids.



## Reminders

Get in-ear and on-screen notifications for tasks like taking medications.



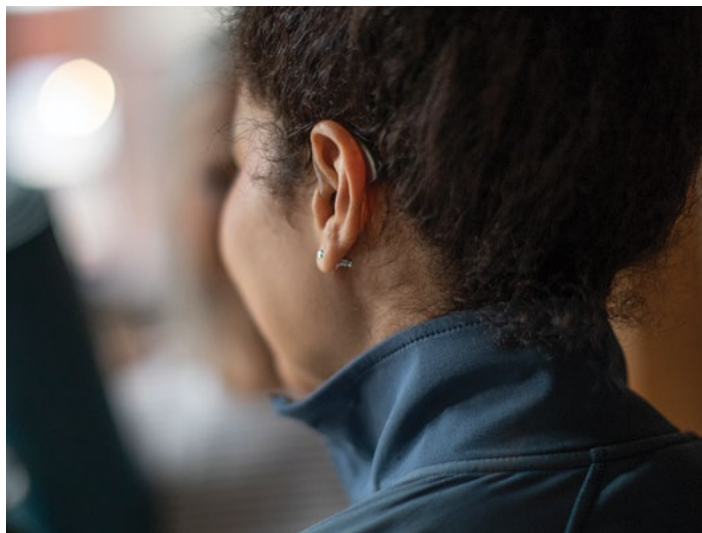
## Auto On/Off

Via Edge AI detects when you put your hearing aids in and take them out saving battery life.



## Translate

Instantly hear speech translated into your language right in your hearing aids.





# Custom. Convenient. Comfortable.

Meet the world's first custom rechargeable hearing aids. Custom means the hearing aid is custom molded to fit your unique ear canal comfortably and securely. Multiple color options allow you to be discreet or show off your new in-ear device.

Our new charger fits all custom hearing aids and provides up to 24 hours of power in a single charge.



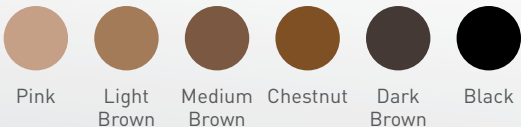


# AI-powered hearing solutions for every need

Talk to your hearing professional about your budget, your lifestyle and how active you are to help find the hearing aid that's right for you. And if you have single-sided hearing loss we have solutions to help you.

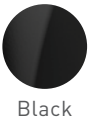
## In-ear Solutions

Custom molded to your  
unique ear canal



# ViaEdge<sup>AI</sup>

## Over-the-ear Solutions



Black



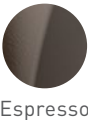
Slate



Sterling



Bright White  
with Sterling



Espresso

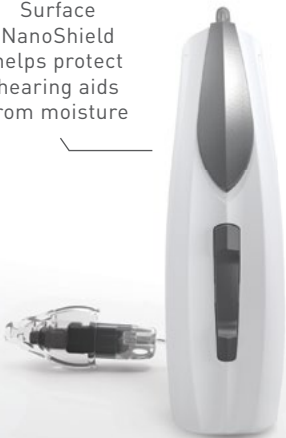


Champagne



Bronze

Surface  
NanoShield  
helps protect  
hearing aids  
from moisture



# Reconnect with what matters most

Sleek, wireless accessories stream the sounds you love directly to your Via Edge AI hearing aids. Enjoy your favorite music, TV shows and phone calls with excellent sound quality.

## 1. Mini Remote Microphone

Enjoy one-on-one conversations in noisy environments by clipping it to your conversation partner's clothing.

## 2. TV Streamer

Easily stream audio from your TV or other electronic audio source directly to your hearing aids.

## 3. Remote Microphone +

Enables easy audio streaming and one-on-one conversations in noisy environments.

## 4. Table Microphone

Make group settings easy with eight built-in microphones that stream the primary speaker's voice to your hearing aids.

## 5. Remote

Easily control memory and volume, mute your hearing aids and turn other special features on and off.

